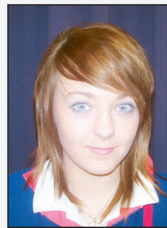


ROKEBY HIGH SCHOOL



SCHOOL TALK: What did you do for work experience?



PHOEBE GRIMSEY: I went to Priceline in Eastlands and learnt how to use the registers. After the week finished, I was offered a job. The staff were very helpful.



TIM DENNIS: I went to the Police and Citizens Youth Club in Hobart. I helped with sport classes and did admin work, answered phones, and had a good time there.



ASHLEY CLARK: I went to the Tasmanian Animal Hospital in Bellerive. I sat in on surgeries and walked some of the animals. I am waiting to hear about a job.



KATE WATKINS: I went to Oceana Health and Fitness. I sat in on the personal training sessions, which gave me an insight into the career. It was a great experience.



EMMA CLARK: I went to the Carebear Cottage on Pass Rd. I looked after little children which included feeding them. I enjoyed my time working with the children. It was a great experience.

Students focus on the future



FUTURE: Personalised learning opportunities for students included a fly-tying business venture.

MOST Grade 10 students are yet to decide what career path they will choose, so the best way to help them decide is a work experience program.

Each year, Grade 10 students from Rokeby High have the opportunity to go out into different workplaces for a week and become part of the workforce.

For example, a student who is thinking of becoming a baker could work at a bakery for a week.

Our teachers listen to what students want to do and then find placements, which will provide students with some knowledge of what a particular job entails.

Our pathway planner Mr Kane Richter continually guides us and looks for opportunities to assist us with our work choices.

He works with teachers deciding what our work experience venue will be.

The staff at Rokeby High make sure every Grade 10 student has a placement, which is suitable for them.

As part of our Grade 10 futures focus, every student has the benefit of one-on-one career counselling support throughout the year.

This support helps to ensure every student can achieve success

after high school in further education, work or training.

At Rokeby High, teachers also believe in providing personalised learning opportunities for students.

This enables us to pursue areas of passion, skill and interest.

Some of the programs used to personalise the curriculum for students include the Rock Challenge, musical performances, drama production, the Aussi sustainability courtyard project, the water-wise garden project, greenhouse building and construction projects.

We have also participated in IE Products (a materials and design technology student enterprise), a fly-tying business venture, and a hotrod car restoration project.

There are also feeder-school extension activities including rock music studies, film making, extended science, MDT, foods and umpiring.

Other projects include the Grade 8 girls Shine program, school soccer and netball exchanges, a Melbourne trip, mentor programs, school-based apprenticeships, AFL Adopt-A-School program, Young Archies art competition and peer support leader training.

BROOKE O'NEIL

Practical skills learnt in a fun environment

EVERY year Rokeby High holds an "E and E Week" which stands for extension and enrichment.

Students from Grades 7 to 9 can choose a range of different activities to experience during the week.

This year's activities included a three-day adventure, extreme makeover, wilderness fishing camp and sketching at Salamanca.

During the three-day adventure, students walked

up Mt Wellington one day and took part in rock-climbing and orienteering on following days.

The extreme makeover involved girls learning about skin care, makeup, department and grooming, which helped improve their self confidence.

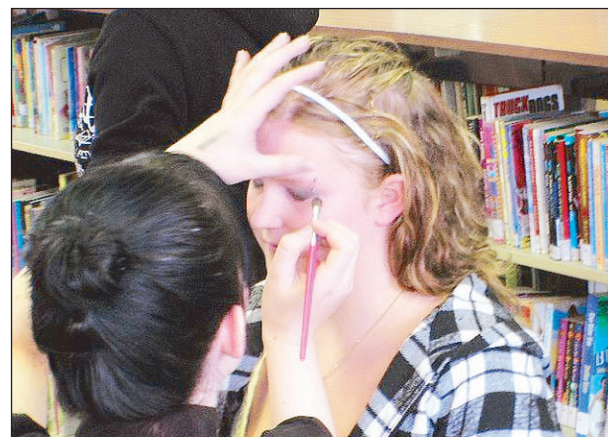
The wilderness fishing trip to the Great Lake was a huge success and thoroughly enjoyed by all, despite the difficult conditions.

"E and E Week" is a special time for students to move outdoors and away from their classrooms, have fun with their friends and learn new skills in a challenging, yet relaxed, environment.

It is also an excellent opportunity for students and teachers to work in new and interesting ways.

"E and E Week" is a tradition at Rokeby High and we look forward to it each year.

BROOKE O'NEIL



EXTREME: A student gets a makeover.

This Mercury School Page was produced by Rokeby High School students Kate Watkins, Brooke O'Neil and Emma Clark with teacher Alana Robertson. The school thanks all its sponsors.



SCHOOL PAGE PROGRAM

Ph: 6230 0736 www.mercurynie.com.au

ADVERTISEMENT
Lin Thorp MLC
Labor Member for Rumney

Tel: 6233 8309
Fax: 6233 4980
lin.thorp@dhhs.tas.gov.au
www.linthorp.com

"Rokeby High is a great school in a great community. It is a pleasure to be their local representative. I wish them all the best"

Written & authorised by Lin Thorp, Parliament House, Hobart

DCM Builders Pty Ltd
ABN 65 954 626 497 Builders License Ntd CC 1367V

All Building and Maintenance Work
Glass Repairs
24 hour service • 7 days a week
Free Quotes

PO Box 1004,
Glenorchy, Tasmania 7010
Email: dcmbuilders@bigpond.com

Paul Menzie
Mobile 0418 125 710
Fax (03) 6273 2417

Robbie's Confectionery

PH 6247 1047

Distributors of Cadbury, Mars, Nestle, Snacks & Drinks

Proud supporters of Rokeby High School

Cut'n' Polish Hair Design

Hair Design
OPEN MON-FRI
ALL DAY SAT
LATE ON WED, THU, FRI
Knopwood Centre
Shop 4, 46 South Arm Rd, Rokeby
PH 6247 8844
Proud sponsors of Rokeby High School

COREY BROWN ELECTRICAL Pty Ltd
Lic No C01973

Proud to support Rokeby High School

Domestic & Commercial Installations

phone: 6247 6005
fax: 6247 6007
email: cbetas@bigpond.net.au
Shop 1-5, 27 South Arm Rd, Rokeby, Tas 7019

Proud to support Rokeby High School

Harmony Garden Centre

450 South Arm Rd,
Lauderdale 7021
Ph 6248 6149

TOTAL TURF CARE

SPORTS OVAL CONSTRUCTION & MAINTENANCE SPECIALISTS

Nick Hansen
0418 127 317

LEGS 'n' BREASTS

Come and try our great range of burgers, salads & snacks

SHOP 3/46 SOUTH ARM RD,
ROKEBY
Phone 6247 1744

Rokeby High School — Building our Future